



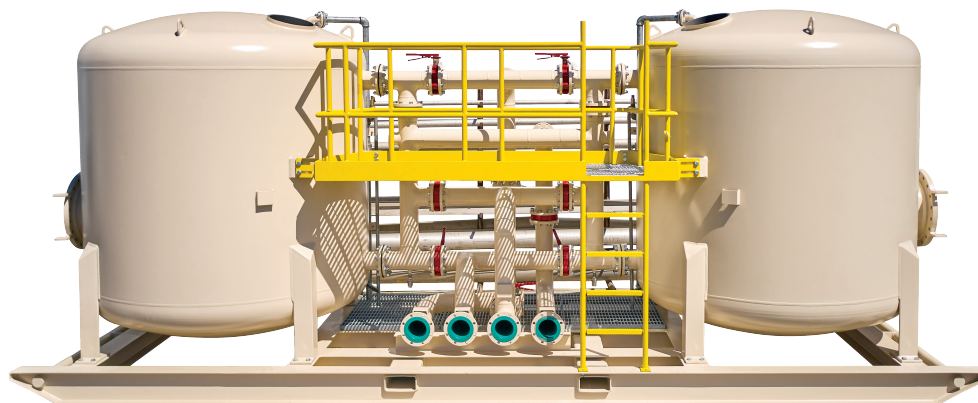
Large Vessel Filters

Pressure Vessels
72" and larger
in diameter

Yardney Large Filtration Vessels

are designed for enhanced water quality filtration applications specific for larger flow rate applications.

These filters may be used as a stand-alone system or in conjunction with or as a pretreatment for other filtration technologies.



Applications

- Removal of organic and/or inorganic suspended solids
- Storm water runoff, industrial process water, incoming plant water, waste water clean-up, industrial water for plant reuse
- PFAS, PFOA & PFOS applications
- Prefiltration in applications such as granular activated carbon, reverse osmosis, cartridge or bag filtration and deionized water
- 100 psi standard operating pressure (high pressure systems available)

Advantages

- ASME Code or non code construction
- Head and Lateral Underdrain or Vertical Septas
- Designed and engineered to your specifications including optional materials of constructions, manways, process nozzles, paint and coatings, etc.
- Standard alone vessels or a full tailored system is available
- Made in USA



Industrial Systems

Large Vessel Filters

Specifications

SPECIFICATIONS INDUSTRIAL LARGE VESSEL FILTERS																
Model	Number of Tanks in System	Standard Flow Range				Filtration Surface Area (total sq ft)	Backwash Flow Rate (per tank)		Media Requirements (cubic feet)		Maximum Pressure (PSI)	Maximum Pressure (BAR)	Inlet/Outlet Pipe Size	Inlet/Outlet Pipe Size (Metric)	Backwash Line Pipe Size	Backwash Line Pipe Size (Metric)
		Minimum		Maximum			gpm	m ³ /hr	Gravel 1/2" - 3/4"	Media						
		gpm	m ³ /hr	gpm	m ³ /hr											
7248-1	1	283	64	424	96	28.27	424	96	31	113	125 psi	8.6	6"	DN150	6"	DN150
7260-1	1	283	64	424	96	28.27	424	96	31	141	125 psi	8.6	6"	DN150	6"	DN150
9648-1	1	503	114	754	171	50.27	754	171	72	201	125 psi	8.6	6"	DN150	6"	DN150
9660-1	1	503	114	754	171	50.27	754	171	72	251	125 psi	8.6	6"	DN150	6"	DN150
12048-1	1	785	178	1178	268	78.54	1178	268	137	314	125 psi	8.6	8"	DN200	8"	DN200
12060-1	1	785	178	1178	268	78.54	1178	268	137	393	125 psi	8.6	8"	DN200	8"	DN200
14448-1	1	1131	257	1696	385	113.10	1696	386	235	452	125 psi	8.6	10"	DN250	10"	DN250
14460-1	1	1131	257	1696	385	113.10	1696	386	235	565	125 psi	8.6	10"	DN250	10"	DN250

Available Options:

- ASME code
- High pressure
- Customer filter station layout piping
- Air scour
- Continuous flow
- Rinse to waste
- Vessels only or complete assembled filtration systems
- Skid, process pipe work, valves and automation
- Alternative under-drain options of Hub and Lateral, Head and Lateral or Septa.
- Alternative coatings including NSF Approve or non NSF approved.



Made in USA

Phone: 951.656.6716
 Toll-Free: 800.854.4788
 Fax: 951.656.3867
 info@yardneyfilters.com



www.yardneyfilters.com